

wineo



# PURLINE

SUSTAINABLE FLOORING  
FOR TOMORROW'S BUILDINGS

**wineo 1500**



**PURLINE** lets you feel  
the power of nature  
under your feet.

**PURLINE** creates  
healthy living spaces  
that are good for people  
and the environment.

# CONTENT

<b>PURLINE wineo 1500</b>	04
high-performance	06
design diversity	08
sustainability	10
Operating costs	12
<b>wineo 1500 plank + tile</b>	14
plank   wood	16
tile   stone	30
tile   graphic	34
tile   textile	36
<b>wineo 1500 roll</b>	38
roll   chip	40
roll   wood	48
<b>wineo 1500 fusion</b>	52
<b>wineo 1500 sea</b>	58
Product composition	60
Accessories	61
Service	62
Certifications	64
Technical characteristics	66

## wineo 1500

# Powering your projects. Protecting our nature.

PURLINE is a high-quality polyurethane floor covering that impresses with its outstanding performance. It combines sustainable ingredients with durable resistance.

Thanks to its natural and authentic designs, the resilient floor covering also offers maximum design freedom – the ideal solution for demanding contract areas that require both functionality, sustainability and style.

### high-performance

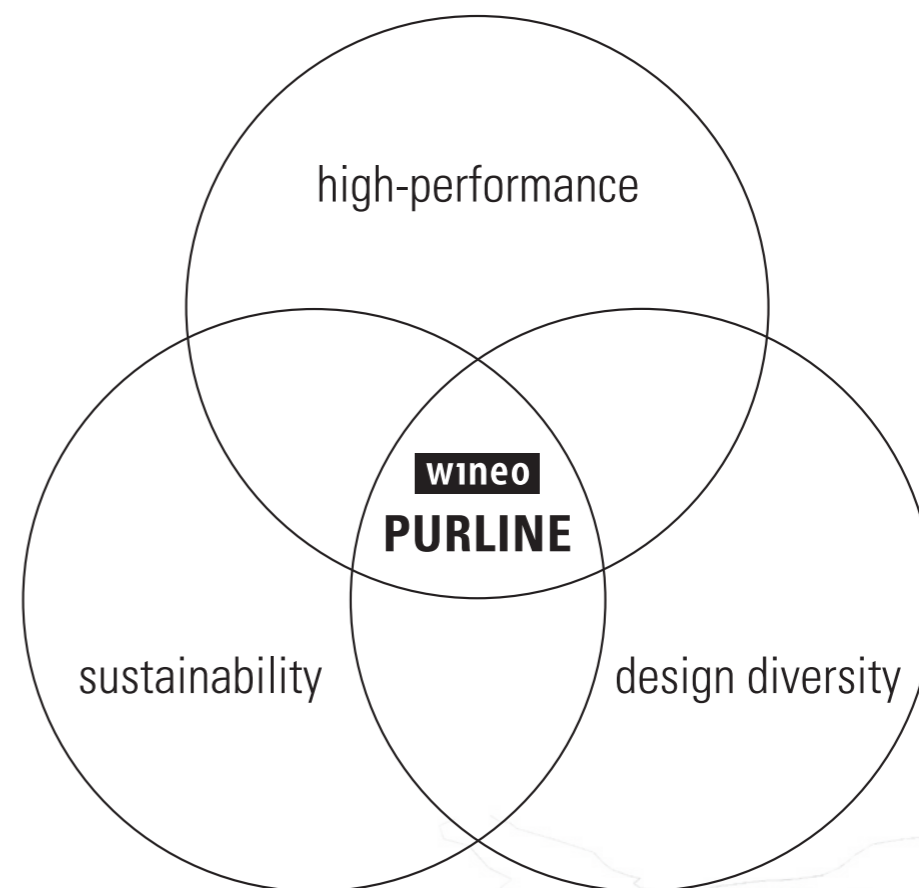
PURLINE wineo 1500 draws its strength from the best components of nature and combines them to create a sustainable subfloor – so hard-wearing, durable and resilient that it retains its exceptional quality and strength for many years.

### design diversity

PURLINE wineo 1500 impresses with a wide colour spectrum of authentic designs. This great variety opens up countless possibilities for creative room concepts and fulfils the desire for individuality.

### sustainability

Developed with the utmost care and consideration for nature, PURLINE wineo 1500 is based on the best natural ingredients, such as vegetable oils and mineral components. This makes it an extremely healthy and sustainable floor covering.



# high-performance

## Durable for heavy-duty use

In addition to excellent residual indentation behaviour of ~0.10 mm (according to EN ISO 24343 1), PURLINE wineo 1500 scores with outstanding resilience.

## Good rollability

Even heavy luggage, shopping and serving trolleys as well as hospital and care beds can be moved easily.

## Suitable for high humidity areas

PURLINE wineo 1500 perfectly suitable for high humidity rooms such as the kitchen or bathroom.

## Outstanding UV resistance

Compared to other floors in its class, PURLINE wineo 1500 has a very high lightfastness  $\geq 7$ .

## Particularly temperature-resistant

PURLINE wineo 1500 can also withstand the effects of high temperatures, e. g. changes in the room climate.

## High Comfort

PURLINE wineo 1500 is kind to joints, warm to the feet, with excellent walking and standing support. Installed on underfloor heating, this also conveys an extra sense of cosy warmth.

## Safe in case of fire

PURLINE wineo 1500 is flame-retardant and fire-toxicologically harmless. The low smoke development ensures that escape routes are more visible in the event of a fire.

## Coating free

No initial maintenance is required for PURLINE wineo 1500. The floor covering does not need to be maintained during its entire service life either.

## Quite

The low noise level creates a quiet environment that can have a positive effect on mental health.

## Low-reflection

Thanks to a low degree of reflection, PURLINE wineo 1500 creates a calm surface effect.



## Application areas

Healthcare

Store Building

Hotels

Restaurants

Education

Office and Administration Buildings

Public Buildings

Apartment Buildings

Maritime

# design diversity

**Diverse optics**

- wide range of designs: wood, stone, plain, graphic, and textile decors

**High-quality feel**

- natural surface structures coordinated with the decor

**Variety of formats**

- plank, tile, and roll formats
- various sizes for individual room effects

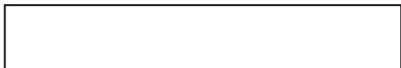
**Creative design freedom**

- freely combinable decors and installation patterns
- ideal for zoned room concepts (e. g., color coding systems)

## Object relevant formats

 480 × 80 mm  
wood XS (\* available from stock, \*\* order-related from 50 m²)

 1200 × 200 mm  
wood L

 1500 × 250 mm  
wood XL

 1000 × 500 mm  
stone XL | graphic XL | textile XL | fusion XL

 20 × 2 m  
chip | wood | fusion



# sustainability

## Harmless to health

- REACH compliant, PVC-, phthalate-, plasticiser- and halogen-free

## Good indoor air quality

- PURLINE does not release any harmful substances into the air
- no added chlorine, plasticizers, or solvents

## Odour neutral

- no odours are released during installation or use

## Made in Germany

- PURLINE PURLINE is manufactured entirely in Detmold, Germany

## Guaranteed natural

- numerous environmental seals confirm the sustainability of PURLINE



Castor

Chalk

## GOOD TO KNOW!

The basic principle of the Cradle to Cradle® philosophy is convincing and points the way for the future. The international certificate differs significantly from other environmental labels. It is awarded exclusively for a proven overall sustainability balance sheet, in accordance with the strictest criteria and in-depth testing. The entire product life cycle is considered, as are its global effects. Cradle to Cradle® certification makes a positive contribution to building certification in accordance with LEED, BREEAM, DGNB and WELL.



// Material health

// Product circularity

// Clean air and climate protection

// Water & soil stewardship

// Social fairness



You can find our  
sustainability report here:

# Operating costs at a glance

## Durable and easy to clean

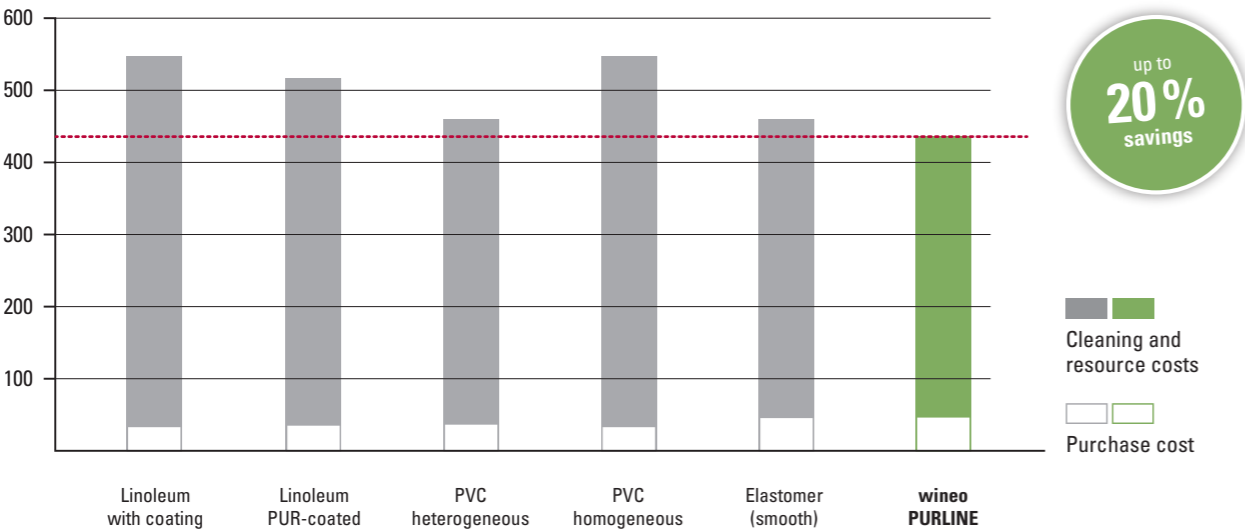
Conventional cleaners can be used without any problems:


- the closed surface makes cleaning particularly easy
- additional polishing or maintenance is not necessary
- all surface disinfectants can be used
- various tests prove effective disinfectability
- contrast agents commonly used in hospitals do not discolour PURLINE floor coverings
- no marks left by furniture after a short regeneration period
- no visible wear due to mechanical stress
- extremely high resistance to sunlight

## Demonstrably economical

The FIGR Institute confirms a lifetime cost saving of up to 20 % after 25 years compared to comparable available flooring materials in the market.

Costs in euros per m² after 25 years



 480 × 80 mm  
wood XS (\* available from stock, \*\* order-related from 50 m<sup>2</sup>)

 1200 × 200 mm  
wood L

 1500 × 250 mm  
wood XL

 1000 × 500 mm  
stone XL | graphic XL | textile XL

# plank + tile

wineo 1500 plank | wood



Siena Oak Nature PL15011WL 1200 × 200 mm



Newport Oak Natural PL15008WL 1200 × 200 mm | PLR393C 20 × 2 m



Canyon Oak Sand PL15001WL 1200 × 200 mm



Newport Oak Brown PL15007WL 1200 × 200 mm | PLR394C 20 × 2 m



Newport Oak Natural

wineo 1500 plank | wood



Iceland Pine Light PL15004WL 1200 × 200 mm



Ravenna Oak Beige PL15009WL 1200 × 200 mm



Durban Oak Taupe PL15003WL 1200 × 200 mm | PLR391C 20 × 2 m



Ravenna Oak Brown PL15010WL 1200 × 200 mm



wineo 1500 plank | wood



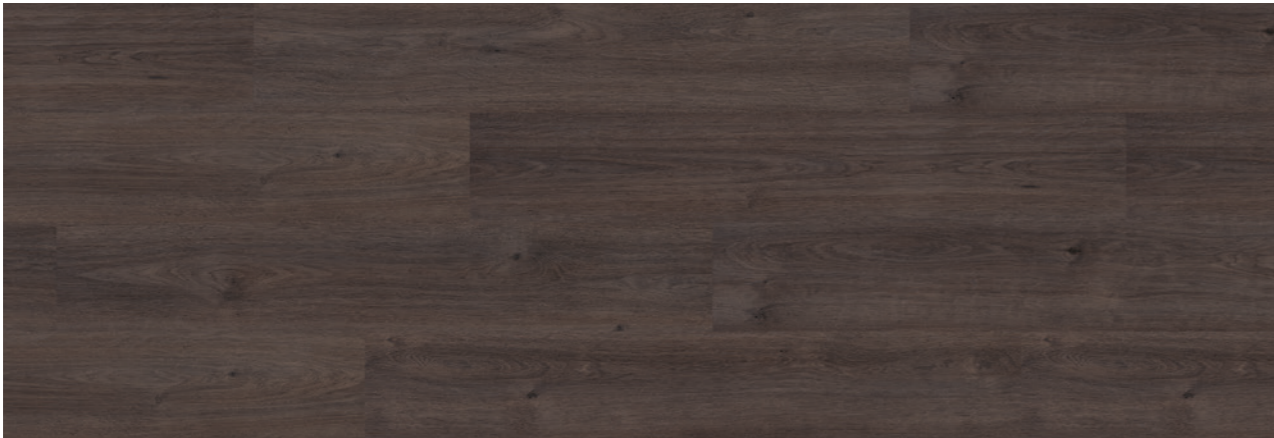
Lodge Oak Brown PL15005WL 1200 × 200 mm



Lodge Oak Dark PL15006WL 1200 × 200 mm



Durban Oak Brown PL15002WL 1200 × 200 mm | PLR392C 20 × 2 m



Aspen Oak Dark PL15000WL 1200 × 200 mm



Durban Oak Brown | Steel Grey



Fjord Maple Beige **PL15205WXL** 1500 × 250 mm | **PL15205WXS\*\*** 480 × 80 mm



Siena Oak Beige **PL15219WXL** 1500 × 250 mm | **PL15219WXS\*** 480 × 80 mm



Intensive Oak Nature **PL15208WXL** 1500 × 250 mm | **PL15208WXS\*\*** 480 × 80 mm



Siena Oak Honey **PL15221WXL** 1500 × 250 mm | **PL15221WXS\*** 480 × 80 mm | **PLR15221W** 20 × 2 m



Fine Oak Light **PL15203WXL** 1500 × 250 mm | **PL15203WXS\*\*** 480 × 80 mm | **PLR15203W** 20 × 2 m



Mayfield Oak Nature **PL15213WXL** 1500 × 250 mm | **PL15213WXS\*\*** 480 × 80 mm | **PLR15213W** 20 × 2 m



Fine Oak Nature **PL15204WXL** 1500 × 250 mm | **PL15204WXS\*\*** 480 × 80 mm



Intensive Oak Amber **PL15206WXL** 1500 × 250 mm | **PL15206WXS\*\*** 480 × 80 mm

(\* available from stock, \*\* order-related from 50 m²)

# wineo 1500 plank | wood



Canyon Oak Honey

PL15200WXL 1500 × 250 mm | PL15200WXS\* 480 × 80 mm



Crafted Oak

PL15201WXL 1500 × 250 mm | PL15201WXS\*\* 480 × 80 mm



Real Oak Nature

PL15217WXL 1500 × 250 mm | PL15217WXS\*\* 480 × 80 mm



Melbourne Oak Natural

PL15223WXL 1500 × 250 mm | PL15223WXS\*\* 480 × 80 mm | PLR395C 20 × 2 m

(\* available from stock, \*\* order-related from 50 m²)



Crafted Oak | Canyon Oak Honey



wineo 1500 plank | wood 25



Photos: © Laura Thiesbrummel





Mayfield Oak Beige **PL15211WXL** 1500 × 250 mm | **PL15211WXS\*\*** 480 × 80 mm



Fine Oak Brown **PL15202WXL** 1500 × 250 mm | **PL15202WXS\*\*** 480 × 80 mm | **PLR15202W** 20 × 2 m



Intensive Oak Taupe **PL15209WXL** 1500 × 250 mm | **PL15209WXS\*\*** 480 × 80 mm



Intensive Oak Brown **PL15207WXL** 1500 × 250 mm | **PL15207WXS\*\*** 480 × 80 mm



Mayfield Oak Taupe **PL15214WXL** 1500 × 250 mm | **PL15214WXS\*** 480 × 80 mm | **PLR15214W** 20 × 2 m



Real Oak Taupe **PL15218WXL** 1500 × 250 mm | **PL15218WXS\*\*** 480 × 80 mm



Ravenna Oak Nature **PL15215WXL** 1500 × 250 mm | **PL15215WXS\*** 480 × 80 mm



Real Oak Amber **PL15216WXL** 1500 × 250 mm | **PL15216WXS\*\*** 480 × 80 mm

(\* available from stock, \*\* order-related from 50 m²)

(\* available from stock, \*\* order-related from 50 m²)

# wineo 1500 plank | wood



Mayfield Oak Brown **PL15212WXL** 1500 × 250 mm | **PL15212WXS\*\*** 480 × 80 mm



Siena Oak Brown **PL15220WXL** 1500 × 250 mm | **PL15220WXS\*** 480 × 80 mm | **PLR15220W** 20 × 2 m



Melbourne Oak Brown **PL15222WXL** 1500 × 250 mm | **PL15222WXS\*\*** 480 × 80 mm | **PLR396C** 20 × 2 m



Lugano Walnut Brown **PL15210WXL** 1500 × 250 mm | **PL15210WXS\*\*** 480 × 80 mm

(\* available from stock, \*\* order-related from 50 m²)



Lugano Walnut Brown | Metropolitan Marble Dark

wineo 1500 tile | stone



Serene Marble Light  
PL15409SXL  
1000 × 500 mm



Serene Marble Grey  
PL15412SXL  
1000 × 500 mm



Serene Marble Nature  
PL15410SXL  
1000 × 500 mm



Serene Marble Dark  
PL15411SXL  
1000 × 500 mm



Modern Stone Grey  
PL15404SXL  
1000 × 500 mm



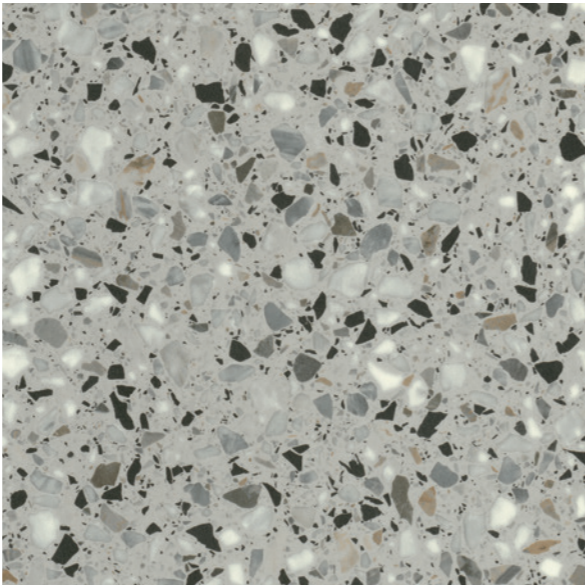
Modern Stone Dark  
PL15403SXL  
1000 × 500 mm



Serene Marble Light



Portland Concrete Light  
PL15408SXL  
1000 × 500 mm



Venice Terrazzo Grey  
PL15413SXL  
1000 × 500 mm



Loft Concrete Grey  
PL15401SXL  
1000 × 500 mm



Loft Concrete Dark  
PL15400SXL  
1000 × 500 mm



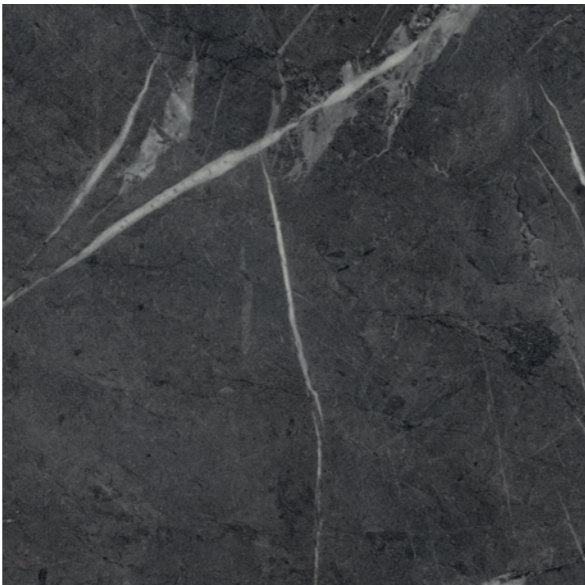
Portland Concrete Grey  
PL15407SXL  
1000 × 500 mm



Olevano Marble Grey  
PL15405SXL  
1000 × 500 mm



Portland Concrete Dark  
PL15406SXL  
1000 × 500 mm



Metropolitan Marble Dark  
PL15402SXL  
1000 × 500 mm



Portland Concrete Light

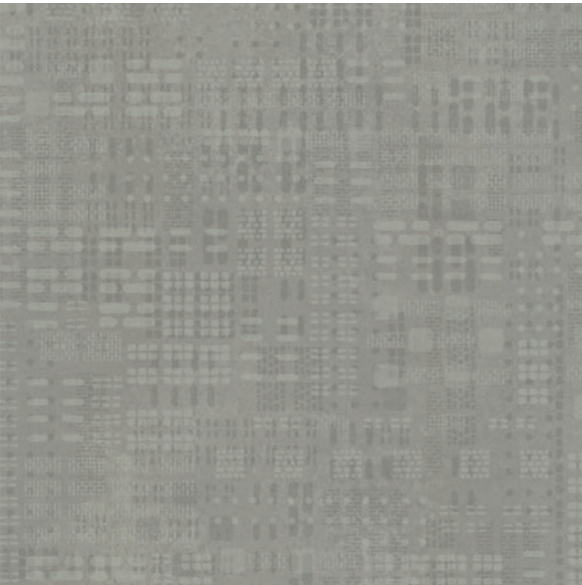
# wineo 1500 tile | graphic



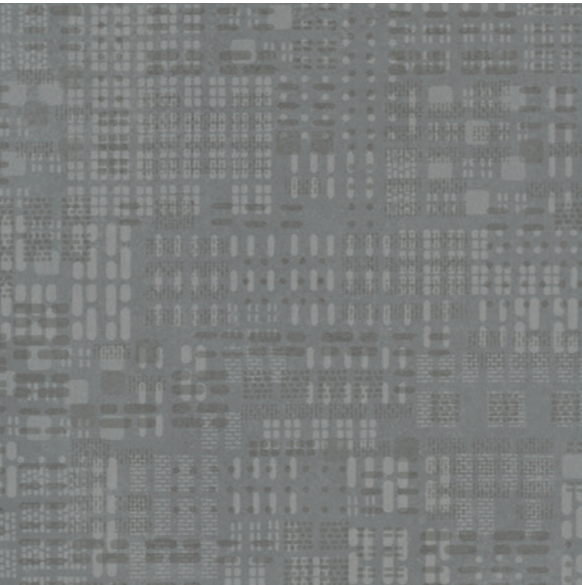
Fractal Ecu  
PL15601GXL  
1000 × 500 mm



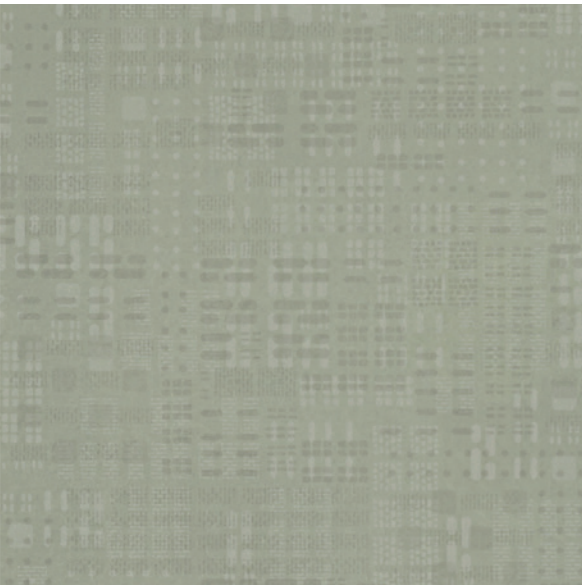
Fractal Light  
PL15603GXL  
1000 × 500 mm



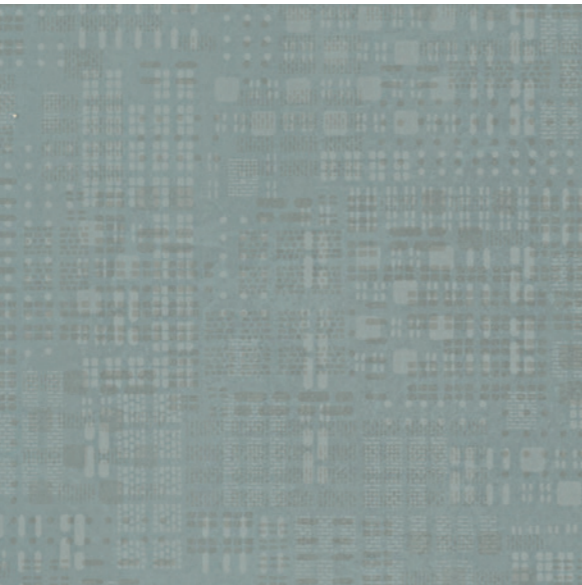
Fractal Grey  
PL15602GXL  
1000 × 500 mm



Fractal Dark  
PL15600GXL  
1000 × 500 mm



Fractal Opus  
PL15604GXL  
1000 × 500 mm



Fractal Wave  
PL15605GXL  
1000 × 500 mm



Fractal Light

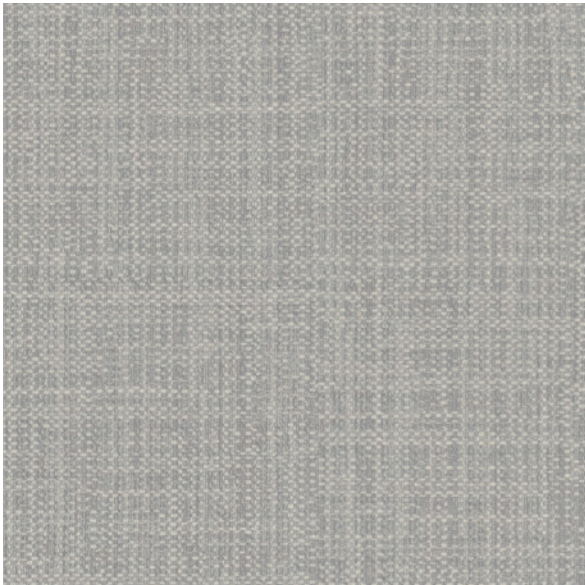
wineo 1500 tile | textile



Oxford Oyster  
PL15502TXL  
1000 × 500 mm



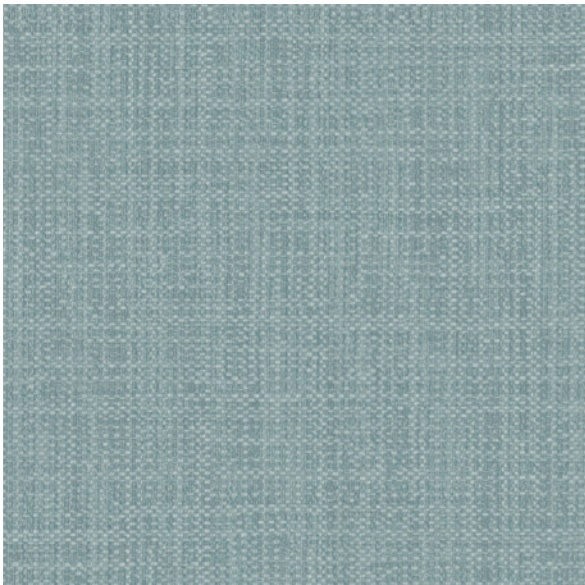
Oxford Flint  
PL15505TXL  
1000 × 500 mm



Oxford Steel  
PL15504TXL  
1000 × 500 mm



Oxford Slate  
PL15503TXL  
1000 × 500 mm



Oxford Ocean  
PL15501TXL  
1000 × 500 mm



Oxford Denim  
PL15500TXL  
1000 × 500 mm

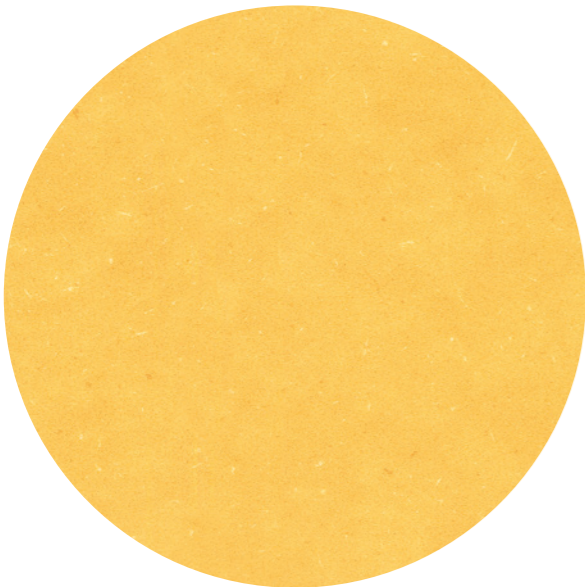




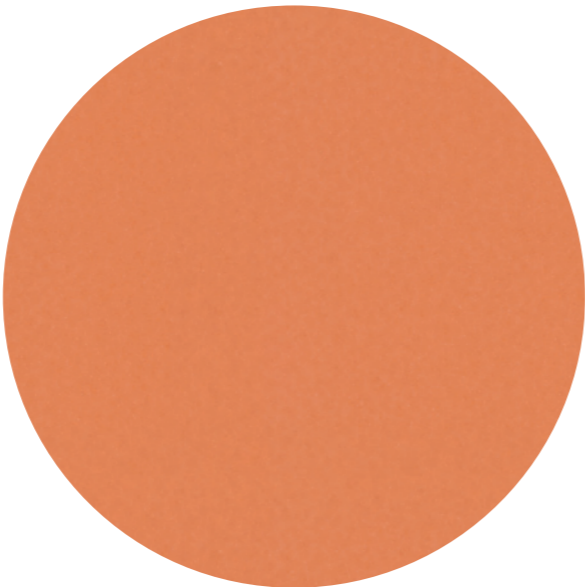
20 × 2 m  
chip | wood

roll

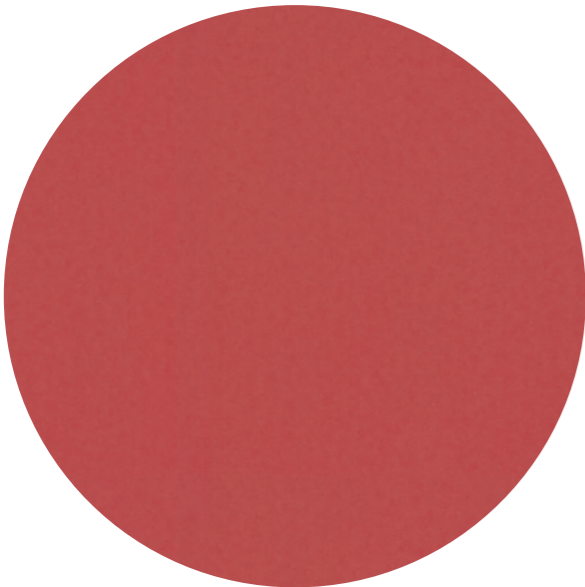
wineo 1500 roll | chip



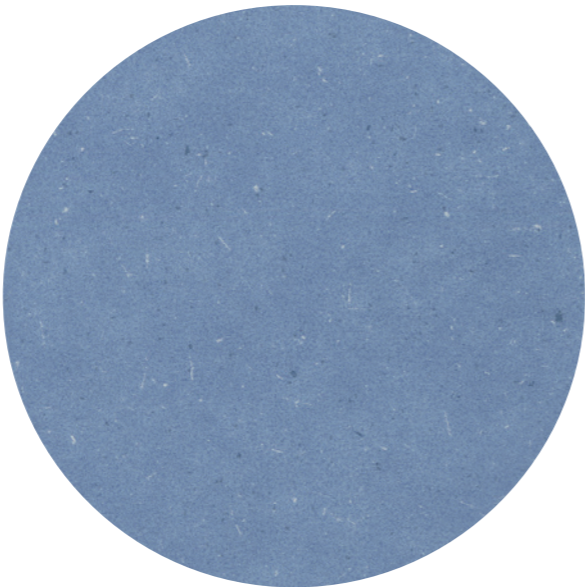
Honey Mustard  
PLR128C 20 × 2 m



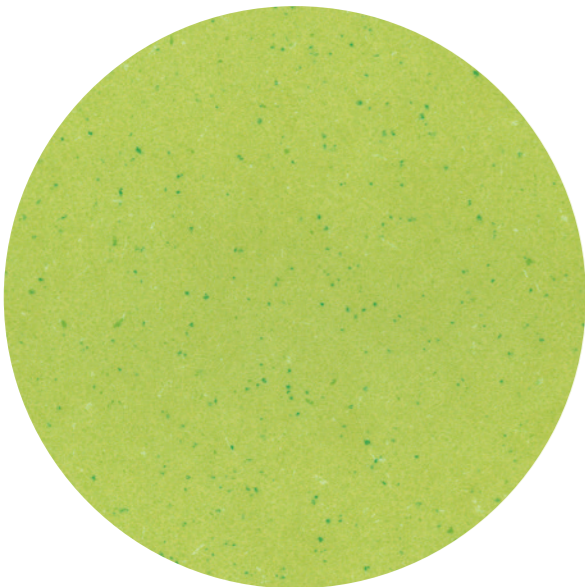
Tropical Orange  
PLR386C 20 × 2 m



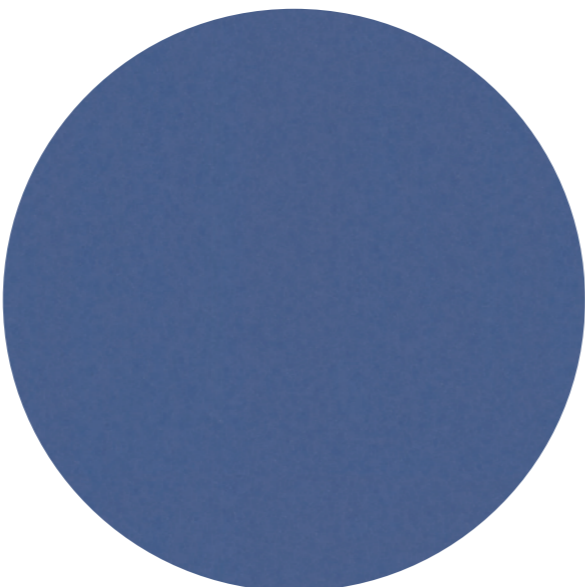
Cherry Red  
PLR387C 20 × 2 m



Summer Sky  
PLR014C 20 × 2 m



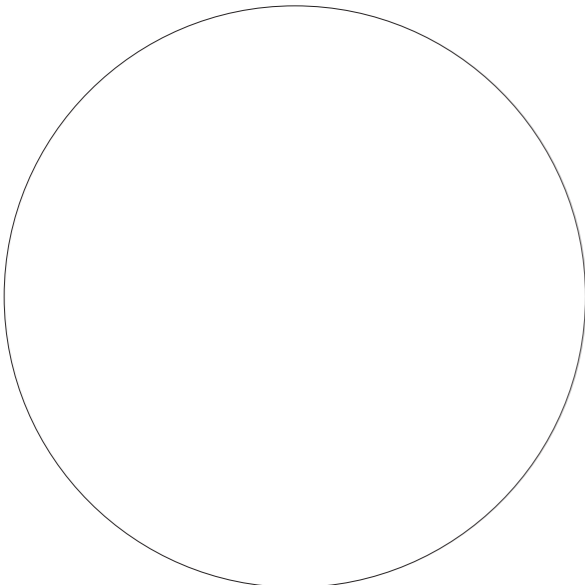
Apple Green  
PLR185C 20 × 2 m



Royal Blue  
PLR385C 20 × 2 m



wineo 1500 roll | chip



Pure White  
PLR025C 20 × 2 m



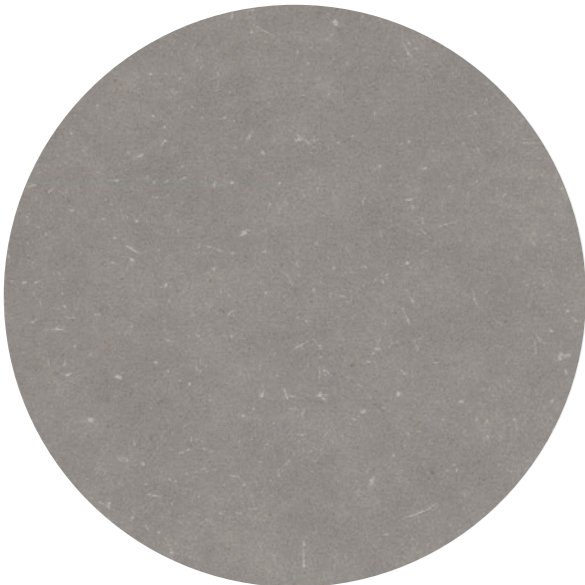
Cotton Beige  
PLR383C 20 × 2 m



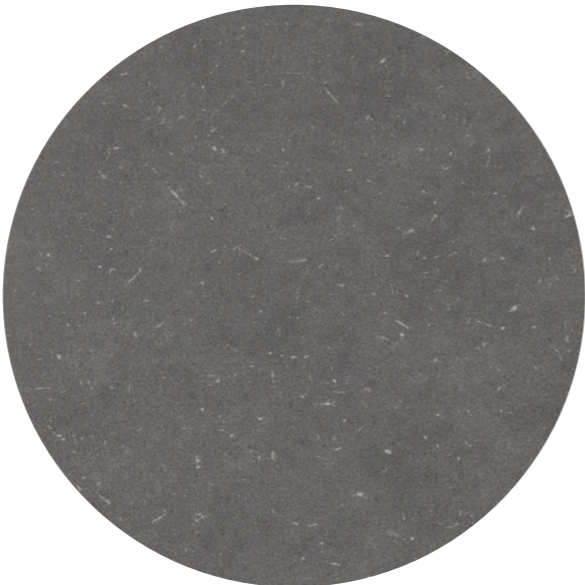
Chocolate Brown  
PLR384C 20 × 2 m



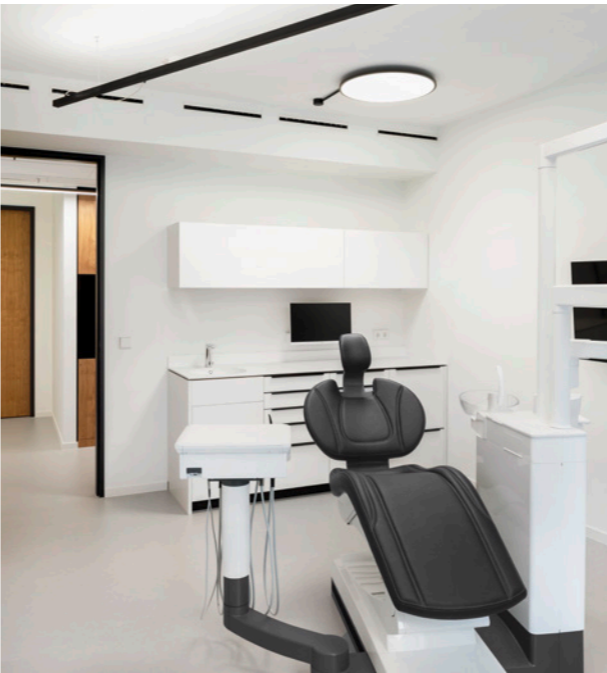
Light Grey  
PLR021C 20 × 2 m



Silver Grey  
PLR022C 20 × 2 m



Steel Grey  
PLR023C 20 × 2 m



wineo 1500 roll | chip



Sunshine Yellow  
PLR377C 20 × 2 m



Jade Green  
PLR373C 20 × 2 m



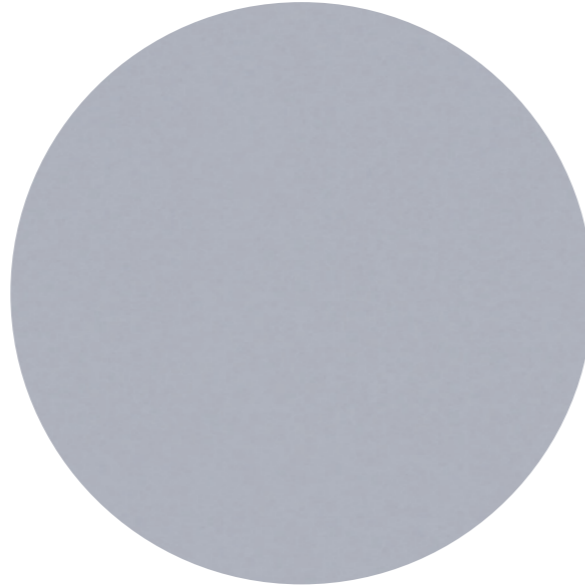
Almond Beige  
PLR375C 20 × 2 m



Powder Rose  
PLR374C 20 × 2 m



Springtime Orange  
PLR378C 20 × 2 m



Fountain Blue  
PLR376C 20 × 2 m



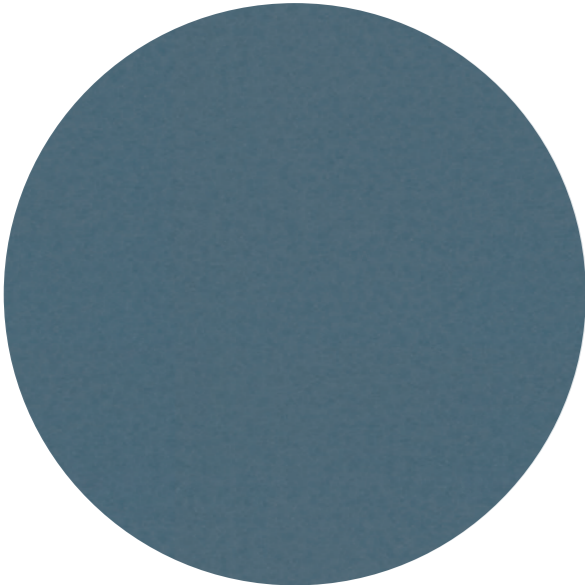
wineo 1500 roll | chip



Aloe Green  
PLR380C 20 × 2 m



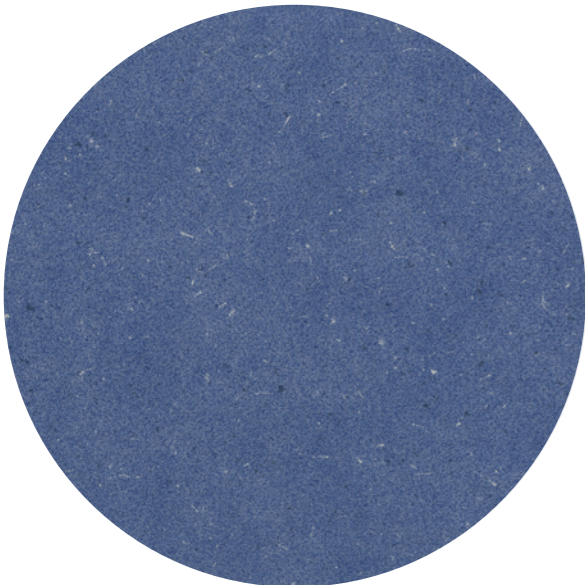
Wheat Brown  
PLR379C 20 × 2 m



Ocean Blue  
PLR381C 20 × 2 m



Rust Brown  
PLR382C 20 × 2 m



Navi Blue  
PLR129C 20 × 2 m



Melange  
PLR003C 20 × 2 m



Ocean Blue | Melbourne Oak Brown



**Fine Oak Light**  
PLR15203W 20 × 2 m | PL15203WXL 1500 × 250 mm | PL15203WXS\*\* 480 × 80 mm



**Siena Oak Honey**  
PLR15221W 20 × 2 m | PL15221WXL 1500 × 250 mm | PL15221WXS\* 480 × 80 mm



**Newport Oak Brown**  
PLR394C 20 × 2 m | PL15007WL 1200 × 200 mm



**Siena Oak Brown**  
PLR15220W 20 × 2 m | PL15220WXL 1500 × 250 mm | PL15220WXS\* 480 × 80 mm



**Mayfield Oak Nature**  
PLR15213W 20 × 2 m | PL15213WXL 1500 × 250 mm | PL15213WXS\*\* 480 × 80 mm



**Newport Oak Natural**  
PLR393C 20 × 2 m | PL15008WL 1200 × 200 mm



**Melbourne Oak Natural**  
PLR395C 20 × 2 m | PL15223WXL 1500 × 250 mm | PL15223WXS\*\* 480 × 80 mm



**Melbourne Oak Brown**  
PLR396C 20 × 2 m | PL15222WXL 1500 × 250 mm | PL15222WXS\*\* 480 × 80 mm



**Halifax Oak Natural**  
PLR389C 20 × 2 m



**Mayfield Oak Taupe**  
PLR15214W 20 × 2 m | PL15214WXL 1500 × 250 mm | PL15214WXS\* 480 × 80 mm



**Fine Oak Brown**  
PLR15202W 20 × 2 m | PL15202WXL 1500 × 250 mm | PL15202WXS\*\* 480 × 80 mm



**Halifax Oak Brown**  
PLR390C 20 × 2 m

(\* available from stock, \*\* order-related from 50 m²)

(\* available from stock, \*\* order-related from 50 m²)

wineo 1500 roll | wood



Napa Walnut Rust  
PLR388C 20 × 2 m



Durban Oak Taupe  
PLR391C 20 × 2 m | PL15003WL 1200 × 200 mm



Napa Walnut Brown  
PLR136C 20 × 2 m



Durban Oak Brown  
PLR392C 20 × 2 m | PL15002WL 1200 × 200 mm





1000 × 500 mm  
fusion XL



20 × 2 m  
fusion

# fusion



pure.three

## wineo 1500 fusion

Especially adapted to the needs of architects and planners, the wineo 1500 fusion offers the matching grey tone for all furnishing concepts. Whether light or dark tones, summerly warm or pleasantly cool – the 16 different designs distinguish themselves and integrate perfectly into the existing colour concept of your room.

wineo 1500 fusion is available as a roll (fusion) and as a tile (fusion XL).



Photos: © Laura Thiesbrummel



reddot award 2019  
winner

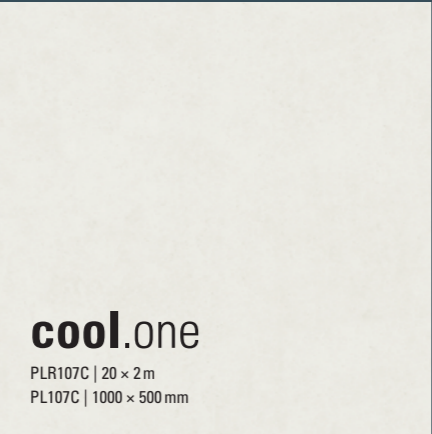
cool

pure

warm

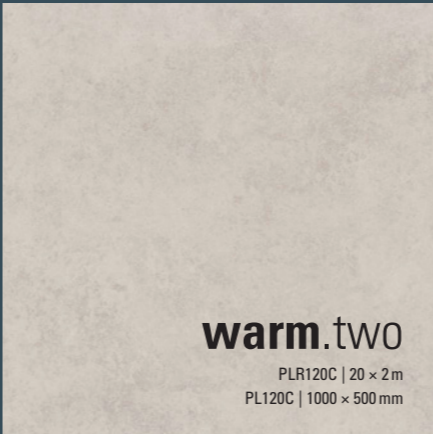
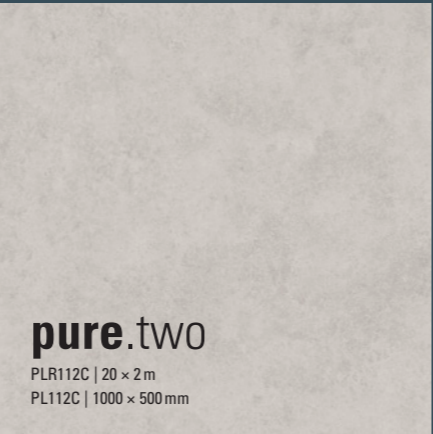
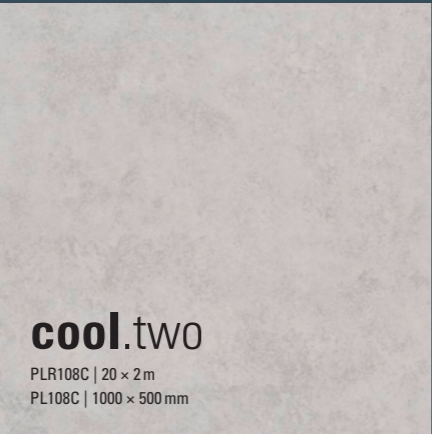
bright

one



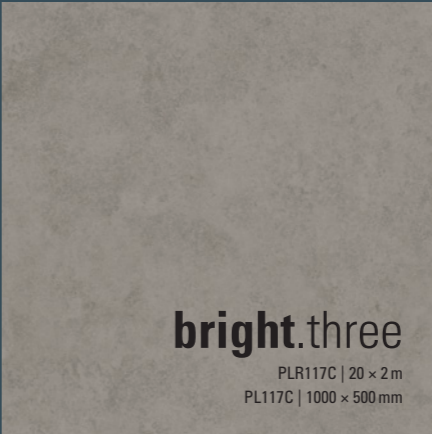
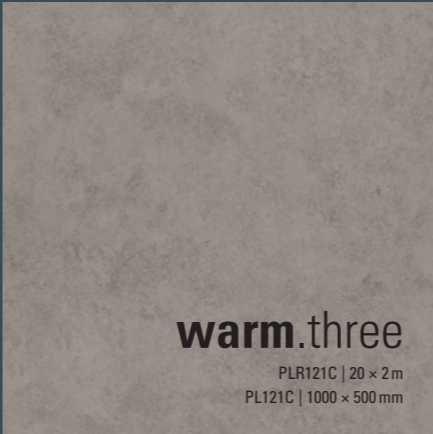
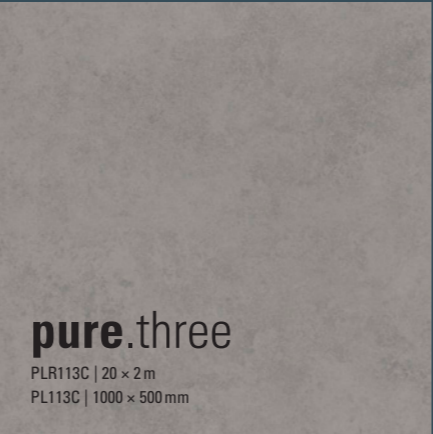
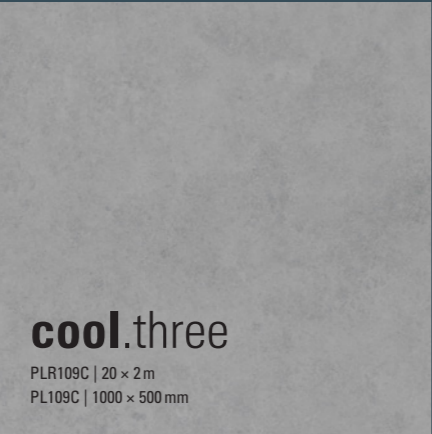
one

two



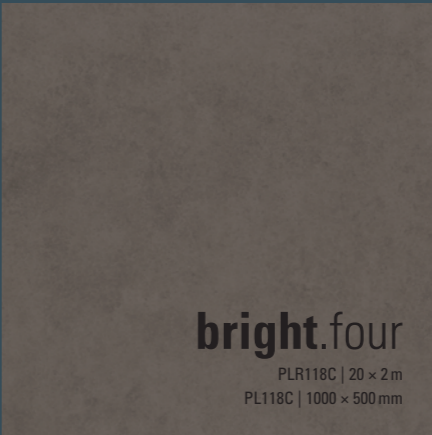
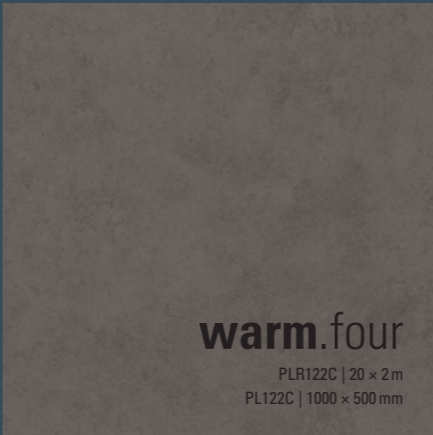
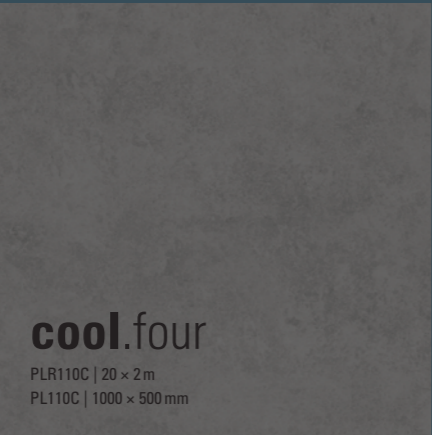
two

three



three

four



four

## wineo 1500 sea

# Special for the Shipbuilding and Offshore Industries

- 100 % Made in Germany
- no addition of chlorine, no plasticisers and no solvents
- absolutely odourless
- does not release any harmful substances into the room air or the environment
- extremely hard-wearing
- excellent fire protection properties (IMO certified)

### Application areas

- Corridors and hallways
- Sports and fitness rooms
- Catering and dining rooms
- Suites



All other standard formats in the collection are also available on request, MOQ 200 m².



More information

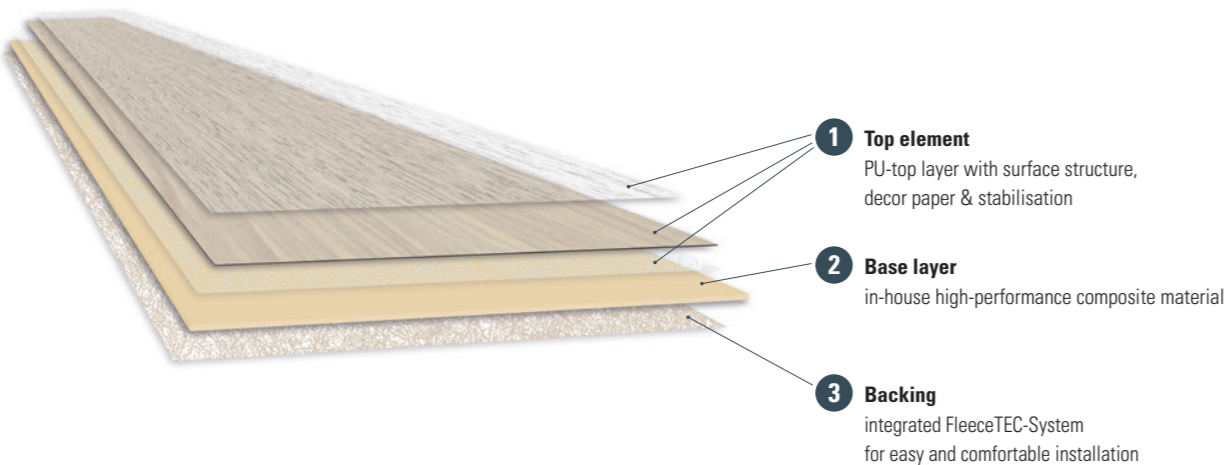


# wineo 1500

## Product composition

**wood XS | wood L | wood XL | stone XL | wood | chip | fusion | fusion XL**

Of course, the inner values are also important. And here, too, wineo 1500 is convincing in all areas.  
The matching PU underlay mat for maximum footfall and walking noise reduction is available as an option.



- 1 Top element**  
PU-top layer with surface structure, decor paper & stabilisation
- 2 Base layer**  
in-house high-performance composite material
- 3 Backing**  
integrated FleeceTEC-System for easy and comfortable installation

# wineo 1500

## Accessories



### Self-adhesive mats

- fast, quiet, clean, odourless and immediately accessible
- no use of liquid adhesive
- 100 % Made In Germany
- additional footfall and walking noise reduction
- can be laid on existing floor coverings



### Skirting boards

- decor matching MDF skirtings for all wineo floor coverings
- universally usable skirtings MDF
- installation heights from 60 mm and 80 mm
- plastic mounting clips included in the range of accessories; alternatively glue or tack
- self-adhesive corner elements for easy installation



### Skirting boards | External corners | Weld rods

Particularly in sensitive areas such as healthcare, in which maximum cleanliness and hygiene are crucial, skirting boards and external corners are indispensable. They connect the wall and the floor perfectly, thereby creating a particularly neat and absolutely impermeable final sealing.  
Our prefabricated skirting boards and external corners for wineo PURLINE are available in every design promoted via the

collections and are always manufactured for you on an order basis. The associated PURLINE fusewires for seamless welding, are also available for every design.

Detailed information can be found in our accessories brochure.

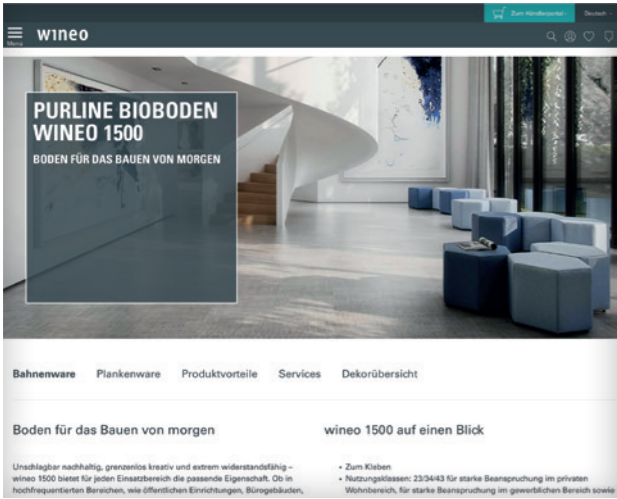


# wineo 1500

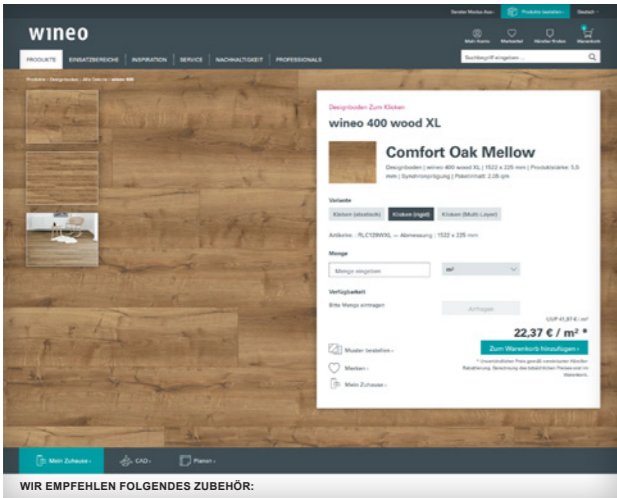
## Service



**Technical Support**  
Do you have any questions about our products, their areas-of application or their installation? Our capable technical-team is happy to help you:  
Tel.: +49 (0) 52 37 609 – 530



- en.wineo.de**
- Even more information is available on our website:
- dealer portal with direct ordering option
  - our top reference projects
  - tender specifications
  - technical data sheets
  - cleaning and installation instructions
  - find a dealer
  - video portal with lots of tips
  - newsletter registration
  - and much more



- Partnerportal at en.wineo.de**
- simple ordering of products
  - real-time enquiry of product availability
  - quick entry of orders
  - order status and shipment tracking
  - optimum customer advice with the advisor mode
  - customised price list available
  - access to image data for all products



**Social Media**  
Inspiration and product-specific knowledge in exciting short articles – you can discover under:

- Instagram
- Facebook
- YouTube
- Pinterest
- LinkedIn



**wineo Floor Viewer**  
Any wineo floor can be simulated in your own home in an instant with our wineo Floor Viewer. The ideal way to choose the perfect flooring for you.

Test the wineo Floor Viewer now at **floorviewer.wineo.de** or by QR code.










# We focus on transparency.

Environmental certifications		
	<p><b>Cradle to Cradle®</b></p> <p>The Cradle to Cradle® certification confirms the utilisation of environmentally safe, healthy and reusable materials (technical reutilisation) and the use of solar power or other regenerative sources of energy, together with responsible water stewardship and strategies adopted by a company to embrace its responsibility to society.</p>	✓
	<p><b>Blue Angel (Blauer Engel)</b></p> <p>The “Blue Angel” guarantees that our products and services fulfil high requirements placed on environmental, health and usage properties. Criteria are compiled for each product group, which are checked every three to four years by the Federal Environment Agency.</p>	✓
	<p><b>eco-INSTITUT-label</b></p> <p>The eco-INSTITUT label confirms that a product complies with certain environmentally friendly and health standards. The label signals to consumers that the certified product is environmentally friendly and has been tested for harmful substances, which promotes transparency and trust with regard to sustainability and health aspects.</p>	✓
	<p><b>Austrian eco-label (Österreichisches Umweltzeichen)</b></p> <p>The “Österreichisches Umweltzeichen” (Austrian eco-label) assesses products from quality, health-related and ecological standpoints. Basically, products can only be certified if they are harmless health-wise. The fulfilment of the criteria is checked every four years.</p>	✓
	<p><b>Greenguard</b></p> <p>The Greenguard certificate ensures that a product fulfils the strictest and most comprehensive requirements for emissions of Volatile Organic Compounds (VOCs) into the air.</p>	✓
	<p><b>Declare</b></p> <p>Voluntary self-disclosure programme aimed at transforming the building materials industry into a healthier and more environmentally friendly product through transparency of ingredients used. By participating in Declare, manufacturers are obligated to disclose all ingredients.</p>	✓
	<p><b>M1</b></p> <p>Just like the “Blue Angel” quality mark in Germany, the M1 seal in the Finnish market labels our products as environmentally friendly, health-friendly and consumer-friendly. The focus is on emissions of Volatile Organic Compounds (VOCs).</p>	✓
	<p><b>A+</b></p> <p>Just like the “Blue Angel” in Germany, the A+ seal identifies our products as ecological, healthy and user-friendly in the french market.</p>	✓
	<p><b>TFI-TÜV PROFICERT PREMIUM for Multi-Layer</b></p> <p>The TFI (Textiles &amp; Flooring Institute GmbH) and the TÜV Hessen evaluate products based on qualitative, health and ecological principals. Fundamentally, only products that are considered harmless to health can be certified.</p>	✓

Environmental certifications		
	<p><b>KfB</b></p> <p>Award from the competence centre for dynamic processes at Bielefeld University of Applied Sciences (FH). The flooring product Purline has passed the dynamic standard examination of rolling behaviour in accordance with the KfB roadmap.</p>	✓
	<p><b>eco-bau Switzerland (eco-bau Schweiz)</b></p> <p>Eco-Bau assesses the ecological aspects of building materials and services. It encompasses all of the significant environmental effects during the entire lifespan of the materials. The assessment is made on the basis of the following criteria: conservation of natural resources, energy for producing materials, solvent emissions, presence of environmentally and health-damaging components, emission of heavy metals and other damaging substances.</p>	✓
	<p><b>FloorScore®</b></p> <p>With SCS Global Services' FloorScore® certificate program manufacturers of floor coverings can assess the conformity of their products with the emission requirements in the U.S. but also worldwide utilized building evaluation systems, such as LEED clearly.</p>	✓
Building certification / Product declaration		
	<p><b>BREEAM</b></p> <p>The British sustainability certificate for development projects is used in 15 other countries.</p>	✓
	<p><b>DGNB</b></p> <p>Certification system of the German Sustainable Building Council and the Federal Ministry of Transport, Building and Urban Affairs. Evaluates a building's quality over its entire life cycle and is internationally applicable.</p>	✓
	<p><b>LEED</b></p> <p>Rating system of the US Green Building Council. It considers the regional and local criteria according to global standards. The use of building materials with Cradle to Cradle® proof is evaluated with bonus points.</p>	✓
	<p><b>WELL</b></p> <p>The WELL Building Standard (WELL) focuses on health and well-being of the people within in the building.</p>	✓
	<p><b>EPD</b></p> <p>The environmental product declarations is a transparency tool for the sustainability valuation of products. It is the basis for sustainability calculations for buildings.</p>	✓
Information platforms		
	<p><b>Heinze</b></p> <p>Germany's leading information platform for building products, company profiles and architectural projects.</p>	✓

wineo 1500

Technical characteristics

wineo 1500	wood XS *	wood L	wood XL	stone XL   graphic XL   textile XL	fusion XL	roll chip   wood   fusion	sea **
Installation type	 Glue	 Glue	 Glue	 Glue	 Glue	 Glue	 Glue
Utilisation classes   EN ISO 10874	23 / 34 / 43	23 / 34 / 43	23 / 34 / 43	23 / 34 / 43	23 / 34 / 43	23 / 34 / 43	23 / 34 / 43
Format	480 × 80 mm	1200 × 200 mm	1500 × 250 mm	1000 × 500 mm	1000 × 500 mm	20 × 2 m	20 × 2 m*
Product thickness	2.5 mm	2.5 mm	2.5 mm	2.5 mm	2.5 mm	2.5 mm	2.5 mm
Content / box	40 / 1.54 m²	20 / 4.80 m²	12 / 4.50 m²	10 / 5.00 m²	10 / 5.00 m²	1 / 40 m²	1 / 40 m²
Boxes / pallet	144 / 221.76 m²	60 / 288.00 m²	56 / 252.00 m²	54 / 270 m²	50 / 250 m²	6 / 240 m²	6 / 240 m²
Weight	3.40 kg / m²	3.40 kg / m²	3.40 kg / m²	3.40 kg / m²	3.40 kg / m²	3.40 kg / m²	3.20 kg / m²
Staining / chemical resistance   EN ISO 26987	very good resistance with regards to concentration and exposure time						
Reaction to fire   EN 13501-1	C <sub>fl</sub> - s1	C <sub>fl</sub> - s1	C <sub>fl</sub> - s1	C <sub>fl</sub> - s1	C <sub>fl</sub> - s1	C <sub>fl</sub> - s1	-
Anti slip category   DIN 51130	R9	R9	R9	R9	R9	R9	R9
Light fastness   EN ISO 105-B02	~ 7	~ 7	~ 7	~ 7	~ 7	~ 7	~ 7
Residual indentation   EN ISO 24343-1	≤ 0.10 mm	≤ 0.10 mm	≤ 0.10 mm	≤ 0.10 mm	≤ 0.10 mm	≤ 0.10 mm	≤ 0.10 mm
Dimensional stability   EN 434 / EN ISO 23999	≤ 0.15 %	≤ 0.15 %	≤ 0.15 %	≤ 0.15 %	≤ 0.15 %	≤ 0.15 %	≤ 0.15 %
Flexural behaviour   EN ISO 24344	≥ 20 mm	≥ 20 mm	≥ 20 mm	≥ 20 mm	≥ 20 mm	≥ 20 mm	≥ 20 mm
Underfloor heating	Suitable for all conventional hot water underfloor heating and electrical systems regulated up to a surface temperature of 29 °C.						
Thermal resistance   EN 12667	~ 0.01 (m²K) / W	~ 0.01 (m²K) / W	~ 0.01 (m²K) / W	~ 0.01 (m²K) / W	~ 0.01 (m²K) / W	~ 0.01 (m²K) / W	~ 0.01 (m²K) / W
Effect of a castor chair   EN 425 / ISO 4918	25000 revolutions – no damage with rollers type W						
Impact sound reduction   EN ISO 10140	~ 8 dB	~ 8 dB	~ 8 dB	~ 8 dB	~ 8 dB	~ 8 dB	~ 8 dB
Effect of a furniture leg   EN 424	Foot type 2 – no visible changes						
Anti-static properties   EN 1815	≤ 2 kV	≤ 2 kV	≤ 2 kV	≤ 2 kV	≤ 2 kV	≤ 2 kV	≤ 2 kV
Guarantee	en.wineo.de/service/guarantee						

\* 6 designs available from stock, 18 designs available to order from 50 m²

\*\* All other standard formats in the collection are also available on request, MOQ 200 m².



Utilisation class 23:  
Domestic area  
with intensive usage



Utilisation class 34:  
Very heavy-duty use  
in the commercial sector



Utilisation class 43:  
Heavy-duty use  
in the light industrial sector

Alle decors shown in this brochure are reproductions. Windmöller GmbH provides no guarantee with regard to mistakes, printing errors and technical changes.

**wineo**

**Windmüller GmbH**  
info@wineo.de  
www.wineo.de

Member of

**FEB** **ERFMI.** **DGNB**

**m**  
**m**  
**f**  
**a**

